



PAMPLONA 2022



28-30

JANUARY

Karate 1 – Series A

PAMPLONA 2022

CONTENTS

1. WELCOME MESSAGE	3
1.1 Greeting from the Head of the host NF	3
2. INTRODUCTION	4
3. INTRODUCTION KARATE 1-SERIES A PAMPLONA 2022.....	5
4. COMPETITION INFORMATION	5
4.1 Categories	5
4.2 Prizes	5
5. CONTACTS INFORMATION	6
5.1 Organizers contact details	6
5.2 Local Organising Committee contact details.....	6
5.3 WKF Event Supervisor contact.....	6
5.4 Covid Team contact	6
5.5 Safe Sport contact.....	6
6. WKF APPROVED PROTECTIONS, KARATEGIS & TATAMIS	7
7. EVENTS SCHEDULE.....	9
8. COMPETITION PROGRAMME	10
9. RANKING	10
10. ONLINE REGISTRATION & OFFICIAL ACCREDITATION	11
10.1 Online Registration Process	11
10.2 Official Accreditation	11
10.3 Technical Support for Online Registration	12
10.4 Entry Fee	12
10.5 Payment.....	12
11. WKF ACCREDITED COACH.....	13
11.1 WKF Accredited Coach Briefing.....	13
11.1.1 Schedule	13
11.1.2 Online Registration	13
11.1.3 Fees	13
11.1.4 Payment.....	13
12. MEDIA	14
12.1 Press	14
13. COMPETITION VENUE.....	14

14.	TICKET FOR SPECTATORS	15
15.	OFFICIAL HOTELS	16
15.1	HQ Hotel.....	16
15.2	Official hotels	16
	Hotels Prices	20
15.3	Transport Services	20
15.4	Meals at the Venue	21
16.	WKF COVID PROTOCOL	21
17.	REQUIRED DOCUMENTS	22
18.	LOCAL COVID RESTRICTIONS	23
19.	VISA REQUIREMENTS	24
20.	CITY / COUNTRY INFORMATION	25
20.1	About PAMPLONA	25
20.2	How to get to Pamplona	25
20.3	Side Events	26
21.	GENERAL INFORMATION	26
21.1	Currency.....	26
21.2	Business Hours	26
21.3	Electricity	26
21.4	Safety in the city	26
21.5	Weather	26
22.	OMISSIONS	26
23.	TERMS OF RESPONSIBILITY	27

1. WELCOME MESSAGE

1.1 Greeting from the Head of the host NF

It is an honor for me, as President of the Spanish Federation of Karate, to welcome you to Spain for the celebration of Serie A, which will be held in Pamplona from 28th to 30th January. I hope that all participants enjoy this fascinating competition.

The Spanish Karate Federation is proud to host this Serie A competition and the organizing committee will do the best to make this a most successful and memorable event.



I want to thank to the World Karate Federation, for trusting the Spanish Karate Federation to hold a big event in Pamplona, and specially, I would like to personally thank the President of WKF Mr. Antonio Espinós for his continued support to our Federation.

I wish all delegations to have unforgettable stay in Pamplona. I am looking forward to meeting you all soon.

Respectfully,

Antonio Moreno Marqueño

President of the Spanish Karate Federation

2. INTRODUCTION

The WKF Karate 1-Series A is a world-class competition that provides karatekas around the world with more competitive opportunities to shine at the highest level. Presented in an open format thus allowing every athlete in the world to compete, the Karate 1- Series A is framed under the umbrella of the Karate 1 to bring together the best competitors in a series of open championships of unprecedented scale and quality. In addition to this, the Karate 1-Series A offers karatekas the chance to increase their ranking position as the universality of top Karate tournaments is showcased.

While maintaining the individual character of each event, all Series A events have to meet certain standards in order to achieve the above-mentioned goals. Therefore, it is necessary to follow these organising rules:

https://www.wkf.net/pdf/WKF_SeriesA_OrganizingRules_2022.pdf

The number of competitors is limited to a maximum of 96 athletes per category. All members of WKF are admitted to participate. The competition categories are identical to those of Senior World Championships except for Kumite team.

The WKF competition Rules in force will be applied:

https://www.wkf.net/pdf/WKF_Competition%20Rules_2020_EN.pdf

https://www.wkf.net/pdf/CRC_Bulletin_Nov2021.pdf

Competitors of individual categories earn ranking points in every WKF Karate1 event according to the official WKF World Ranking regulations:

https://www.wkf.net/pdf/wkf_worldranking_rules.pdf

3. INTRODUCTION KARATE 1-SERIES A PAMPLONA 2022



The Karate 1 – Series A Pamplona 2022 will be held next 28th to 30th January at the Navarra Arena.

4. COMPETITION INFORMATION

The participation will be limited to those competitors from position 33 onwards of the WKF Ranking.

4.1 Categories

- Female Kumite: - 50kg, - 55kg, - 61kg, - 68kg, + 68kg
- Male Kumite: - 60kg, - 67kg, - 75kg, - 84kg, + 84kg
- Individual Kata: Female, Male
- Team Kata: Female, Male

4.2 Prizes

For Individual categories (Kumite and Kata):

- Gold medallist: 500 €
- Silver medallist: 300 €
- Bronze medallist: 100 €

For team categories (Kata):

- Gold medallist: 600 €
- Silver medallist: 400 €
- Bronze medallist: 200 €

5. CONTACTS INFORMATION

5.1 Organizers contact details

Spanish Karate Federation

T: +34 91 535 95 87

Email: rfek@rfek.es

Address: Vicente Muzas 4, mezzanine 28043 Madrid

5.2 Local Organising Committee contact details

Accommodation / Transport – karate@viajeseci.es

Visa Support - sfashho@rfek.es

Other queries – sfashho@rfek.es

5.3 WKF Event Supervisor contact

The WKF Event Supervisor for this Youth League event is Mr. Dominique Sigillo. His contact details are as follows:

Email: sigillo.wkf@gmail.com

5.4 Covid Team contact

Michael Wenner (mail: mwenner@wkf.net)

5.5 Safe Sport contact

WKF events must be safe for all athletes and participants and entirely free from any form of non-accidental violence, namely, harassment and abuse. Any such behaviour will not be tolerated.

If you or someone you know has been the victim of abuse or harassment in Karate, get help and report it.

Your first point of contact for any incident at this event is the WKF Event Supervisor, whose contact information you can find detailed above.

Otherwise, any other incident can be reported via the [WKF Official Complaint Form](#) and sent to: safekarate@wkf.net

6. WKF APPROVED PROTECTIONS, KARATEGIS & TATAMIS

The Karate 1-Youth League complies with the highest level of presentation. In order to guarantee the correct delivery of the event, and to ensure the suitable quality of the tournament, exclusively the following brands are WKF Approved for use in the 2022 Karate 1-Youth League Season.

SPORT PROTECTIONS “WKF Approved”



*Click on the logos

ALL “WKF APPROVED” KARATE-GIS ARE ALLOWED TO PARTICIPATE IN THIS COMPETITION.

(INCLUDING KARATEGIS WITH THE BRAND EMBROIDERED IN RED OR BLUE ON THE SHOULDERS)

Click on the picture to see all the “WKF approved” Karate-Gis.



DISTRIBUTORS ASSISTANCE “WKF Approved”

Click on the image to visit the distributors by countries.



TATAMIS “WKF Approved”

ishii

PROGNOME
TATAMI BY TROCELLEN

TaiShan

TatamiX

WESING

九日山

*Click on the logos

7. EVENTS SCHEDULE

DUE TO THE CURRENT EMERGENCY HEALTH SITUATION THIS EVENT WILL BE HELD UNDER THE WKF COVID-19 PROTOCOL;

https://www.wkf.net/pdf/WKF_COVID_protocol.pdf

In order to respect and properly follow the WKF Covid-19 protocol, the schedules below will be strictly followed.

THURSDAY 27 th January 2022	ACTIVITY	PLACE
10:00-17:00	Registration and Weigh-In	NAVARRA ARENA
16:00-17:00	Referee Meeting	HOTEL TRES REYES (Room Navarra)
17:00-18:30	Accredited Coach Briefing	HOTEL TRES REYES (Room Navarra)
18:30-19:30	Coaching Meeting & Draws	NAVARRA ARENA

8. COMPETITION PROGRAMME

Day/hour	COMPETITION
Friday, 28 th January 09:00-17:50	<u>Eliminations & Semi-Finals</u> Female Kata, Male Team Kata <u>Eliminations & Semi- Finals</u> Female Kumite (-68kg, +68kg) Male Kumite (-75kg, -84kg, +84kg)
Saturday, 29 th January 09:00-18:00	<u>Eliminations & Semi-finals</u> Male Kata, Female Team Kata <u>Eliminations & Semi- Finals</u> Male Kumite (-60kg, -67kg) Female Kumite (-50 kg, -55 kg, -61kg)
Sunday, 30 th January 09:00-14:00	<u>Repechages</u> Male Kumite (-60kg, -67kg, -75kg, -84kg, +84kg) Female Kumite (-50kg, -55kg, -61kg, -68kg, +68kg) <u>Bronze Medals</u> Individual Kata (Female /Male) Male Kumite (-60kg, -67kg, -75kg, -84kg, +84kg) Female Kumite (-68kg, +68kg, -61kg, -50kg, -55kg) Team Kata (Female / Male)
Sunday, 30 th January 14:30-18:00	<u>Finals</u> Individual Kata (Female / Male) Male Kumite (-60kg, -67kg, -75kg, -84kg, +84kg) Female Kumite (-68kg, +68kg, -61kg, -50kg, -55kg) Team Kata (Female / Male) Award Ceremony

9. RANKING

Competitors can earn ranking points in every Karate1 event according to the official WKF Ranking Criteria, point 3.2 of the WKF [World Ranking Rules](#).

The participation will be limited to those competitors from position 33 onwards of the WKF ranking.

The applicable ranking will be the one updated on the day of the registration opening, November 24th, 2021. ([RANKING LINK](#))

10. ONLINE REGISTRATION & OFFICIAL ACCREDITATION

No onsite registration will be accepted. The registration will be validated once completed the online payment through the payment platform. In case of any questions concerning the online registration please directly contact the Sportdata software team via the email address: office@sportdata.org

Clubs / teams / federations are responsible for the quality of the entered registration data.

10.1 Online Registration Process

All **competitor** registrations must be made **online** through the following Sportdata link;

<https://www.sportdata.org/wkf/set.php?id=590>

All **referee** registrations must be made **online** through the following Sportdata link;

<https://www.sportdata.org/wkf/set.php?id=593>

All **coach** registrations must be made **online** through the following Sportdata link;

<https://www.sportdata.org/wkf/set.php?id=592>

The registration starts on **November 24, 2021**, and close on **January 17, 2022 at 12:00 hrs GMT +0** and it is divided in the following two phases (all phases will close at the 12:00 hrs GMT +0 of the listed day);

- **Phase 1, from November 24 to December 8, 2021 (first two weeks)**: Registration only by National Federations for athletes ranked between position 33 and 100 (included) of WKF Ranking. Maximum, 1 athlete per category.
- **Phase 2, from December 9th, 2021 to January 17th, 2022**: Open registration.

Changes of online registration data are possible until the end of the online registration period.

10.2 Official Accreditation

The official registration session will take place on Thursday, January 27th, 2022 from 10:00 to 17:00h

If changes are required during the official registration session because of incorrect or missing registration data, a fee of € 20 is charged for each change.

At registration, accreditation cards will be issued with the participants' main data, a photograph and information about registered categories. The accreditation card must be worn at all times during the event.

Only members of national federations recognized by WKF are admitted to participate, following the registration procedures described in Series A Organising Rules 2020 (SA OR Point 6 Registration).

All participants must submit an official document (passport or other valid ID card) for the WKF identification and validation at the accreditation session.

The accreditation of any competitor must be done by the athlete or the athlete's coach, in person bringing the athlete passport or other valid ID at the accreditation session.

The competitor who has not collected, either personally or through his/her coach the accreditation during the official registration, will not be included in the draw.

10.3 Technical Support for Online Registration

Web: https://www.sportdata.org/wkf/set-online/index.php?active_menu=home

Email: karate1@sportdata.org

The weighing will be carried out immediately after receiving the accreditation, those athletes who will not attend the weighing will not be included in the draw.

10.4 Entry Fee

The entry fees are:

Per individual category entry:

- 60€: 2021- 11-24 to 2021-12-23
- 70€ 2021-12-24 to 2022-01-07
- 90€ 2022-01-08 to 2022-01-17

Per team category: €70

10.5 Payment

All payments must be processed through the ONLINE PAYMENT PLATFORM. **Onsite payments will NOT be accepted.**

11. WKF ACCREDITED COACH

According to the Coach License Manual, **the minimum level required to take part in the Karate 1 events is the “Accredited Coach” level.** To obtain such certification, **coaches must attend a compulsory Coach Briefing.**

11.1 WKF Accredited Coach Briefing

Please find below the Coach schedule and the details for the registration process:

11.1.1 Schedule

Accredited Coach Briefing				
Thursday	27 th January	from 17:00 hrs	to 18:30 hrs	HOTEL TRES REYES (Room Navarra)

11.1.2 Online Registration

Those coaches who wish to attend to the “WKF Accredited Coach Briefing” in Pamplona must be registered online and must fill out the “Accreditation Agreement for Coaches” that can be downloaded from the online registration site.

All coach registration must be made online latest until January 17th, 2022, through the following link:

<https://www.sportdata.org/wkf/set.php?id=594>

Should you have any difficulties when registering, please contact support@sportdata.org or karate1@sportdata.org for technical support.

11.1.3 Fees

We would like to remind you that the fee to attend to the “Coach Briefing” and to obtain a new license or to renew your expired license of WKF Accredited Coach is 300 CHF.

11.1.4 Payment

All payments must be made through Sportdata platform.

No other methods of payment will be accepted.

Registrations and payments onsite will not be accepted.

12. MEDIA

12.1 Press

Journalists will be required to follow the WKF COVID-19 Protocol, including presenting a negative PCR Test or Certificate of Vaccination and wearing a face mask at all times. Learn more about WKF COVID-19 Protocol here: www.bit.ly/WKF_COVID19_protocol

Press accreditation can only be given to professional journalists working for a media and having proof of their credentials.

Media professionals can register to request press accreditations through the online registration form which can be found here:

<https://www.sportdata.org/wkf/set.php?id=590>

Video recording will not be allowed

Should you need more information about press or media related issues, please directly contact the World Karate Federation's office: press@wkf.net

All press will need to follow the WKF Protocol and hand in printed version of the required documents (section 17)

13. COMPETITION VENUE

NAVARRA ARENA

Plaza Aizagerria, 1, 31006 Pamplona (Navarra)

Website: www.navarraarena.com



Navarra Arena is a multipurpose pavilion that hosts all kinds of events thanks to its versatility. Since its opening, it has hosted large cultural and sporting events, to small-format events in its different rooms.

- Capacity: 11.800 spectators.
- Constructed area: 45.685 m².
- Lines 1, 6, 9, 11 and 16 of the local urban bus have a nearby stop. More information: www.infotuc.es

Location:

<https://www.google.com/maps/place/Navarra+Arena/@42.7968252,-1.6402083,17z/data=!4m5!3m4!1s0xd5093b4fdc25075:0x9f93e23988f3cfdb!8m2!3d42.7960013!4d-1.635228?hl=en>



OFFICIAL TATAMI FOR THIS TOURNAMENT

14. TICKET FOR SPECTATORS

You can acquire the tickets through the following link:

<https://bit.ly/EntradasKarate>

Ticket sales date: from 13th December.

Prices:

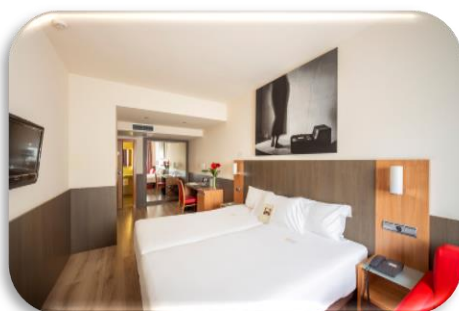
3 DAY PASS TICKET	Friday	Saturday	Sunday
25 €	8 €	10 €	10 €

15. OFFICIAL HOTELS

15.1 HQ Hotel

MAISONNAVE HOTEL 4* (Calle Nueva, 20 – 31001 Pamplona)

Venue distance: 4,9



15.2 Official hotels

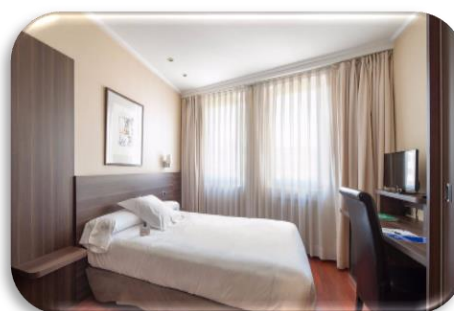
HOLIDAY INN EXPRESS PAMPLONA 3* (Area Comercial Galaria, C. R, N°111, 31192 Mutilva).

Venue distance: 3 km



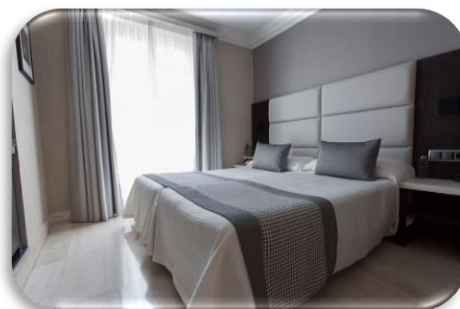
2. YOLDI HOTEL 3* (Av. San Ignacio, 11, 31002 Pamplona)

Venue distance: 3,2 km



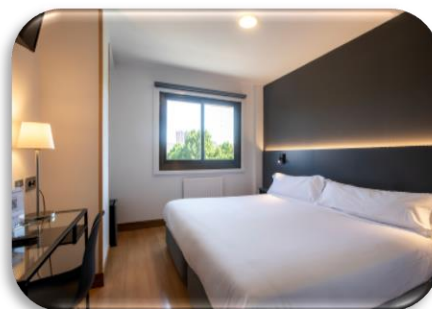
3. SERCOTEL EUROPA HOTEL 3* (C. Espoz y Mina, 11, 31002 Pamplona)

Venue distance: 3,3 km



4. SANCHO RAMIREZ HOTEL 3* (C. Sancho Ramírez, 11, Bajo, 31008 Pamplona)

Venue distance: 3,4 km



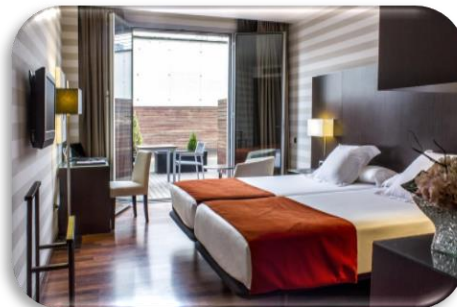
5. BED4U PAMPLONA 3*SUP (Carretera de Zaragoza, Km. 3, 31192 Pamplona)

Venue distance: 2,2 km



6. ZENIT PAMPLONA 4* (Parque Comercial Galaria, Calle X, 1, 31191 Pamplona)

Venue distance: 1,13 km



7. BLANCA DE NAVARRA 4* (Av. de Pío XII, 43, 31008 Pamplona)

Venue distance: 3,3 km



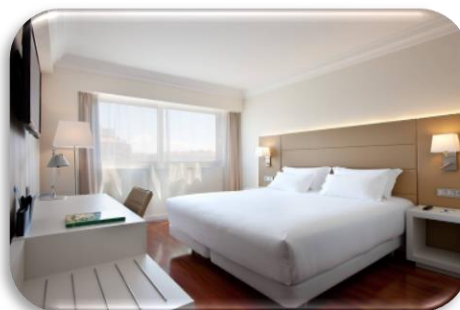
8. ALBRET HOTEL 4* (C. Ermitagaña, 3, 31008 Pamplona)

Venue distance: 3,7 km



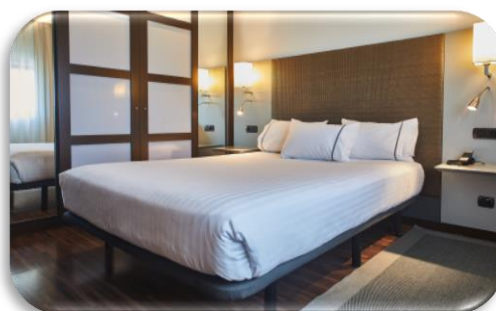
9. NH IRUÑA PARK 4* (C. de Arcadio María Larraona, 1, 31008 Pamplona)

Venue distance: 4,2 km



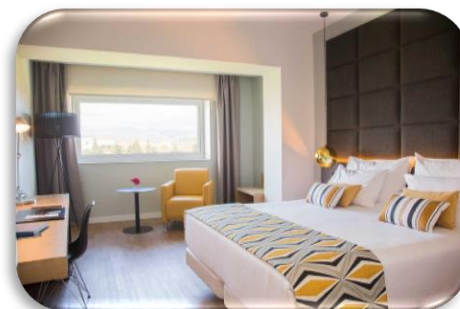
10. SILKEN ZIZUR MAYOR HOTEL 4* (C. Etxesakan, 3, 31180 Zizur Mayor)

Venue distance: 9,6 km



11. TRES REYES HOTEL 4*^{SUP} (C. Taconera, 1, 31001 Pamplona)

Venue distance: 6,2 km



Hotels Prices

	HOTEL	CAT.	VENUE DISTANCE	B&B			H.Board		
				SINGLE	DOUBLE	TRIPLE	SINGLE	DOUBLE	TRIPLE
HQ	MAISONNAVE	4*	4,9 km	83,00 €	52,00 €	49,50 €	101,50 €	71,00 €	68,00 €
1	HOLIDAY INN EXPRESS PAMPLONA	3*	3 km	86,00 €	47,50 €	37,50 €	101,00 €	62,50 €	52,50 €
2	YOLDI	3*	3,2 km	80,00 €	59,50 €	51,00 €	100,50 €	80,00 €	71,50 €
3	SERCOTEL HOTEL EUROPA	3*	3,3 km	91,50 €	58,50 €	-	-	-	-
4	SANCHO RAMIREZ	3*	3,4 km	115,00 €	71,50 €	69,50 €	138,50 €	95,00 €	93,00 €
5	BED4U PAMPLONA	3* sup	2,2 km	96,00 €	53,00 €	43,00 €	108,50 €	65,50 €	55,50 €
6	ZENIT PAMPLONA	4*	1,13 km	103,50 €	66,00 €	54,50 €	128,00 €	91,00 €	78,50 €
7	BLANCA DE NAVARRA	4*	3,3 km	98,50 €	61,00 €	58,50 €	116,00 €	78,50 €	75,00 €
8	HOTEL ALBRET	4*	3,7 km	108,00 €	62,50 €	58,50 €	127,00 €	81,00 €	73,50 €
9	NH IRUÑA PARK	4*	4,2 km	113,50 €	64,00 €	57,00 €	137,00 €	88,00 €	83,00 €
10	SILKEN ZIZUR MAYOR	4*	9,6 km	76,00 €	45,00 €	42,50 €	97,00 €	66,50 €	63,50 €
11	TRES REYES	4* sup	6,2 km	109,00 €	62,00 €	55,00 €	132,50 €	86,00 €	78,50 €

*Rates per person and night. Vat included

Reservation & Payment Policy:

Reservations by email: karate@viajeseci.es

50% of payment in order to confirm the reservation

50% of payment before Dec. 20th

*Rooms and rates subject upon availability

Cancellation Policy:

Until Dec. 20th no penalties.

From Dec. 21st to Jan. 3rd: 50% of penalties

From Jan. 4th to the arrival date: 100% of penalties.

15.3 Transport Services

ROUTE: MADRID AIRPORT – PAMPLONA HOTEL

19 SEATS	1.365 €
30 SEATS	1.420 €
55 SEATS	1.470 €

ROUTE: BILBAO AIRPORT – PAMPLONA HOTEL

19 SEATS	580 €
30 SEATS	620 €
55 SEATS	650 €

ROUTE: BARCELONA AIRPORT-PAMPLONA HOTEL

19 SEATS	1.840 €
30 SEATS	1.890 €
55 SEATS	1.995 €

*Rates per bus and service. Vat included

Reservation & Payment Policy:

Reservations by email: karate@viajeseci.es

100% of payment in order to confirm the service.

*Buses and rates subject upon availability

Cancellation Policy:

7 days before the service, 100% of penalty.

15.4 Meals at the Venue

Information related to meals at the venue will be published soon.

16. WKF COVID PROTOCOL

DUE TO THE CURRENT EMERGENCY HEALTH SITUATION THIS EVENT WILL BE HELD UNDER THE WKF COVID-19 PROTOCOL:



Key Elements

Karate in Times of Coronavirus

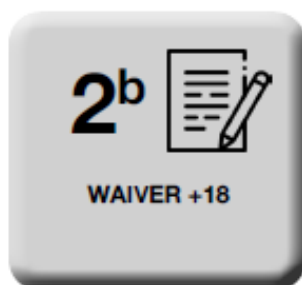
17. REQUIRED DOCUMENTS

MANDATORY DOCUMENTS TO BE SUBMITTED AT THE OFFICIAL ACCREDITATION

On registration day all participants must submit the 2 following documents (I, II) Printed:

- I) Proof of COVID Status (only 1 of the following per person)
 - a. A Negative COVID-19 RT-PCR Test
 - i. Result issued at most 72 hours before the onsite registration in English. No antigen tests will be accepted.
 - b. A COVID-19 Vaccination Certificate*
 - i. showing that they were fully vaccinated at least weeks before the day of registration.
 - c. A COVID-19 Recover Official Certificate*
 - i. They must have tested positive at least 2 weeks and at most 6 months (180 days) before registration day.
- *Specification in WKF Covid Protocol
- II) Waiver of Liability Form (Only 1 of the following per person)
 - a. NF/Team Representative & Team List
 - b. Individual +18 years old
 - c. Individual - 18 years old (Parental Consent required)

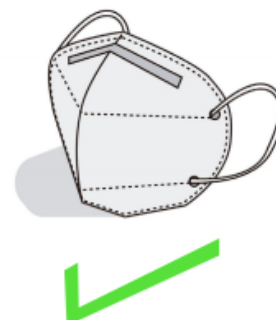
• The NF/Team Representative takes full responsibility for the validity of all signatures and information provided.



CERTIFIED FACE MASKS

The use of Certified Masks of FFP2 type or equivalents (N95 (United States), KN95 (China), P2 (Australia/New Zealand), Korea 1st class (Korea), DS2 (Japan)) within the specifications for use is always mandatory in the venue, with the exceptions for athletes that are detailed herein.

Once an athlete enters the venue grounds the athletes must always wear Certified Masks except while warming up, training, and competing in the designated areas/tatamis, respectively. This also means the Certified Mask shall be worn in transit between the Warmup and Competition Areas.



NOT ALLOWED MASKS



Surgical



Industrial



With Valve



Cloth

18. LOCAL COVID RESTRICTIONS

Mandatory documents to enter to Spain due to COVID-19 situation.

- Health Control Form
- Allowed Certificates

Health Control Form

All passengers arriving in Spain by air or sea, including those who come in transit to other countries, must complete a Health Control Form before departure and obtain their QR to present it at boarding and health controls upon arrival in Spain

- ✓ By air: through the web <https://spth.gob.es> or the Spain Travel Health –SpTH– application (Android, iOS)
- ✓ By sea (ferries): through the web <https://spthm.puertos.es/>

Check, to fill in the Health Control Form, if your country of departure is in the list of countries / risk zones.

<https://www.mscbs.gob.es/en/profesionales/saludPublica/ccayes/alertasActual/nCov/spth.htm>

The list of countries or risk areas, as well as the criteria used to define them, will be reviewed every seven days and their update will be published on this page.

If you come from a third country, first of all, you must check if you can travel to Spain in the button: Requirements to enter Spain from third countries.

<https://www.mscbs.gob.es/en/profesionales/saludPublica/ccayes/alertasActual/nCov/spth.htm>

At the present time, it is not mandatory to present the FCS (Health Control Form) if the trip to Spain is made by land

Allowed Certificates

- A COVID-19 Vaccination Certificate. It will be valid from 14 days after the administration of the complete vaccination schedule, and with vaccines currently authorized by the European Medicines Agency or by the World Health Organization.
- Certificate of Diagnostic test with negative result (NAAT or RAT) performed within 72h (NAAT) / 48h (RAT) prior to arrival
- COVID-19 Recovery certificate. It will be valid from day 11 after the first NAAT-type diagnostic test with a positive result until 180 days after taking the sample.

These requirements may vary depending on the country of origin of the trip. For more information consult this link:

<https://www.mscbs.gob.es/en/profesionales/saludPublica/ccayes/alertasActual/nCov/spthRequisitosEntradaEspana/home.htm>

Local COVID Restrictions in Navarra

From 27th November 2021, people 12 years and older will have to present any of the three COVID certificates to access:

- ✓ Restaurants and venues with catering, with a capacity of more than 60 diners.
- ✓ Discotheques and nightclubs, establishments with a café-show license and bars with a special license (in the latter from midnight).
- ✓ Massive indoor events with food and / or drink consumption for more than 1.000 people.

19. VISA REQUIREMENTS

Entry requirements:

<http://www.exteriores.gob.es/Portal/en/ServiciosAlCiudadano/InformacionParaExtranjeros/Paginas/RequisitosDeEntrada.aspx>

List of nationals of third countries required to be in possession of a valid visa:

<http://www.exteriores.gob.es/Portal/es/ServiciosAlCiudadano/InformacionParaExtranjeros/Documentos/listapaisesvisado.pdf>

20. CITY / COUNTRY INFORMATION

20.1 About PAMPLONA

Declared a National Monument and more than five kilometers long, Pamplona's defensive walls and the Citadel constitute one of Europe's most interesting and best-preserved Renaissance military complexes.

Pamplona preserves its Renaissance city walls and an old town formed by three boroughs, La Navarrería, San Cernin and San Nicolás, which merged in a single city in 1423 when King Charles III enacted the Privilege of the Union. Going down one of the adjacent streets, you arrive at the neighbourhood of La Navarrería, in the center of which stands Santa María la Real Cathedral.

The history and the urban development of the city has led to its being full of green areas and trees, where cultural heritage and nature merge. It has many acres of parks and gardens which make it a green city and interesting specimens of unusual trees dotting its parks and streets. Its 60,000 trees and 740 acres of green areas account for 15% of the surface area of the city.

Pamplona has three gastronomic routes that run through the most important places in the city: The Camino route, the Encierro route and the Green route. Pamplona has a wide offer of restaurants whose menus are designed to suit all tastes and budgets and where you can relish miniature delicacies: pintxos.

Winter in Pamplona brings fairytale scenery amid woodlands and magical peaks in the heart of the Pyrenees. Pamplona is the ideal destination for a weekend visit.

20.2 How to get to Pamplona

Pamplona has different means of transport. You can arrive by car, bus, train or plane. The new bus station is located in the city center, in Calle Yanguas y Miranda. The Renfe train station is in the San Jorge neighborhood, and offers different routes linking Pamplona to numerous cities in Spain.

➤ BY PLANE

The **Pamplona airport** is located in the town of Noáin, at a distance of six kilometers from Pamplona.

City bus line A connects the train and bus stations with the airport terminal.

<https://www.infotuc.es/index.php/es/>

You can also take a taxi to the airport. For more information about the service, www.taxipamplona.com

➤ BY TRAIN

A number of train routes link Pamplona to other Spanish cities. If you're taking the train from Madrid to Pamplona, the journey takes around three hours. From Barcelona, the journey can take from four to nine hours, depending on the type of train. For more information on the train routes and bookings, click on the following link <https://www.renfe.com/es/es>

The Pamplona train station is located in the district of San Jorge, in the north-eastern part of the city. On foot, it can take about half an hour from the Old Quarter of the city to the train station, but it's also possible to take a bus. The lines connecting the train station to the city center are number 9 and the special A line linking the train station, bus station and airport. Line 7 connects the station with the Hospital complex. There's also a taxi stand outside the station.

➤ BY CAR

Pamplona is located in the center of the Autonomous Community of Navarre, in northern Spain, very close to the border with France. By road, the city is within easy reach of a number of different places.

Less than two hours away are Bilbao, along the AP-15, and Zaragoza, connected to Pamplona by the AP-68 and AP-15 motorways.

The car journey from Madrid to Pamplona takes just over four hours. Although there are a number of options, the most common route is via the A-2 expressway to Medinaceli, taking the N-111 to Soria, followed by the N-122 to Tudela where it is then possible to take the AP-15 motorway as far as the capital city of Navarre.

From Barcelona, the most popular option is to take the AP-2 motorway to Zaragoza, then the AP-68 and, finally, the AP-15 to Pamplona.

Visitors coming from France generally cross the border at Irun and take the N-121-A road to Pamplona in a journey that takes little over one hour.

More information, click on the following link <https://www.pamplona.es/en/tourism/how-to%20arrive-and-get-about-in-the-city>

20.3 Side Events

Due to Covid-19 Situation, all side events will be confirmed at the official registration.

21. GENERAL INFORMATION

21.1 Currency

Spain currency is the euro (€)

21.2 Business Hours

The commercial hours of stores are very often uninterrupted between 10:00 and 21:00. Sometimes it closes between 2:00 p.m. and 5:00 p.m., especially in summer.

21.3 Electricity

The plugs are in accordance with the European system of round pins. 220V/ 50Hz

21.4 Safety in the city

Emergency services: 112 (medical, police, fire)

21.5 Weather

Temperatures range from 0°C- with highs of 9°C , and high possibility of rain.

22. OMISSIONS

As regards that the specific items are not expressly foreseen in the present bulletin reference is to be made to the general rules and guidelines contained in WKF Regulations.

23. TERMS OF RESPONSIBILITY

This form must be filled in and signed by the head of delegation, team, or the individual, then uploaded during online registration for the event.

_____ the undersigned, as

- ☐ the Head of Delegation of my National Federation
- ☐ the participating Athlete
- ☐ the Referee

duly enrolled to participate in the Karate 1 Series A, which will be held in Pamplona, Spain, from 28 January 2022 to 30 January 2022, with full knowledge of the Statutes, the Rules and the Norms of the World Karate Federation (WKF), pledge myself to faithfully accomplish the regulations of the aforementioned entity, and I take any and all administrative, civil and criminal responsibilities of whatever happens to

- ☐ our athletes, coaches, referees and other members of our delegation
- ☐ myself

participating at these Championships, before, during and after the competition, such as physical injuries, personal expenses, or monetary debts and casual material damages to the hotels, the venue, means of transportation etc.

Furthermore, I exempt from any legal, civil or criminal responsibilities the organizers of the Championships, the World Karate Federation and the Spanish Karate Federation and its directors, as well as any person, company, or entity related to the event (sponsors, public and private entities).

Country/Nation:	
Surname, First name:	
Passport number & expiry date:	
Credit Card details & expiry date:	
Position in the federation:	
Address:	
Phone number:	
Email:	

- ☐ I authorize the organizers of the event to use images, photos and the names of our competitors and other members of our delegation / myself for the sport activities and publications of karate, related to the event, without any monetary compensation.

Date & place:

Signature:



KARATE 1 – SERIES A

Pamplona 2022

